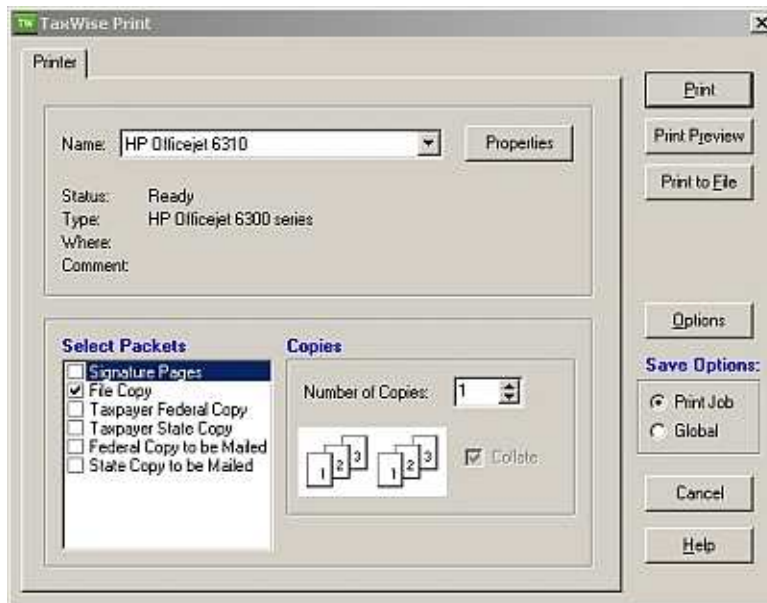


## Set “Print Return” Defaults

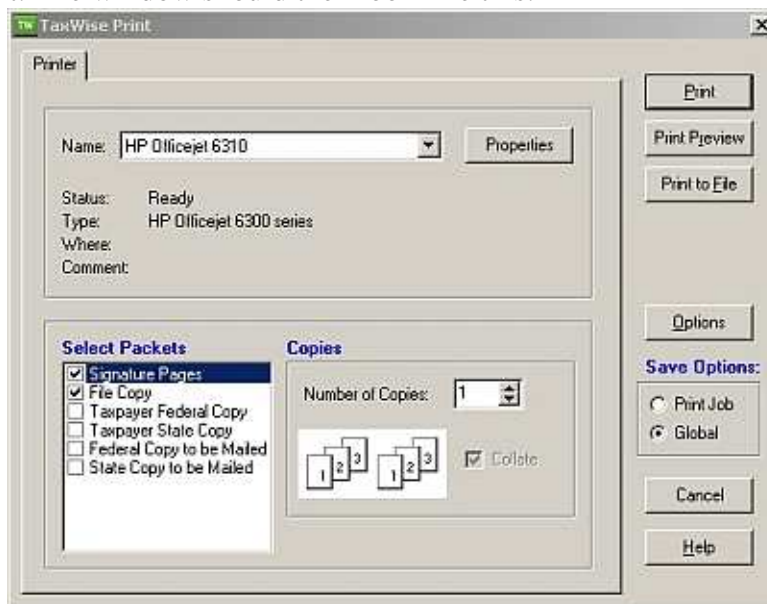
The print package defaults you see when click the “Print Return” icon in TaxWise need to be set. For all returns, you need to print the Signature Pages and the File Copy. For mail-in returns you also need to print the Federal Copy to be Mailed and the State Copy to be Mailed.

This procedure needs to be done only once, and only with an e-filed return.

**Set Signature Pages and File Copy as the Defaults:** When you print your first e-file return of the day you will click the Print Return icon in TaxWise, and TaxWise will display the following dialog:



Click the check box beside “Signature Pages” and click the button beside “Global” under Save Options at the right. The window should then look like this:



Click Print, and the defaults are set as shown. Again: once only, and only for an e-filed return!